

VOLUSIA COUNTY, FLORIDA

Seeks qualified candidates for the position of:

Management and Budget Director

About Volusia County

History

Volusia County was established in 1854 and became the 30th county in the state of



Florida. The County's historic places reveal a rich and exciting past. The remnants of massive shell heaps along the Atlantic coast and the St. Johns River tell of numerous bountiful harvests by native peoples for more than 40 centuries.

At the turn of the 20th century, Volusia experienced a roller-coaster sequence of booms and busts -- the more prosperous times evidenced by the historic architecture of the County's cities and towns. Today many of these historic places are open as attractions to the public or are visible from public right-of-ways.

Location and Topography

Volusia County is situated on the east coast of Central Florida. The 47 miles of Atlantic Ocean beaches are a world class playground, with beach-front cities including Daytona Beach, Ormond Beach and New Smyrna Beach. Volusia County is about an hour's drive north of Disney World and the Kennedy Space Center. It's also within a few hours drive of other major Florida communities.

Cities

Volusia County is seated in DeLand. There are sixteen cities of various sizes and demographics in the County. They are:

Daytona Beach; Daytona Beach Shores; DeBary; Deltona; Edgewater; Holly Hill; Lake Helen; New Smyrna Beach; Oak Hill; Orange City; Ormond Beach; Pierson; Ponce Inlet; Port Orange and South Daytona. The population of the unincorporated County is 115,000. The total 2006 County population was 470,770. The County's 2010 projected population is about 515,000.



Volusia County Council Mission Statement
Engage in actions and policies that maintain and enhance public confidence in Volusia County Government.

About the Organization

Volusia County is a charter county under Florida law. The Florida Constitution provides for "Home Rule" county charter government when approved by the voters in a referendum election. Under the home rule charter, the organization and authority of county government is decided by the local citizens rather than being dependent on the legislature in Tallahassee. The people decide by local referendum election what county government organization will be most responsive to their needs. Charter government enables the County to adopt laws without the need for prior authorization by the State Legislature.

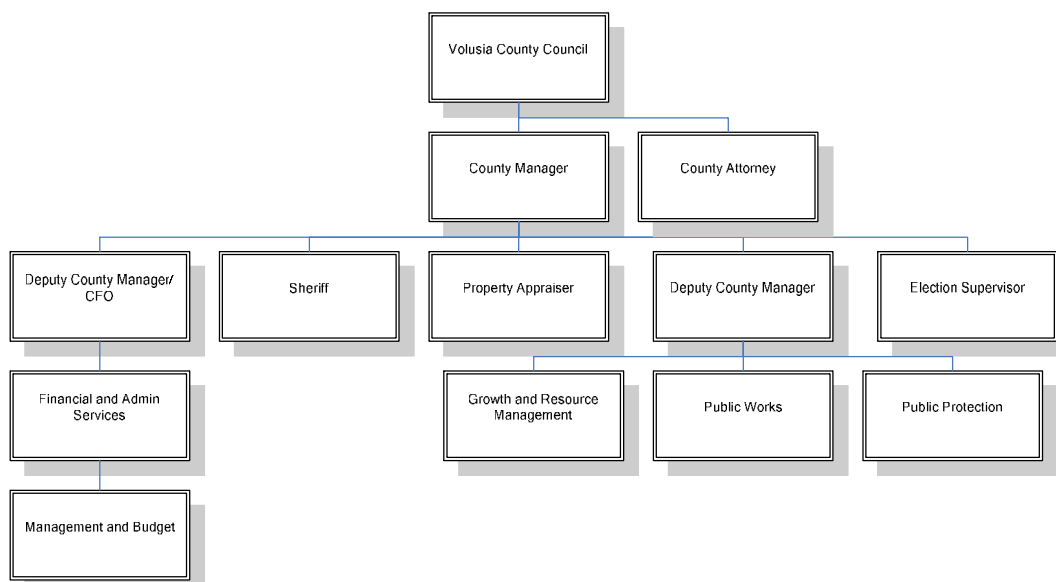
The Volusia County Charter provides for a Council/Manager form of government. Laws and policies are made by the 7-member County Council. All management and administrative duties are carried out by the County Manager who, along with the County Attorney, is appointed by and serves at the pleasure of the County Council.

Five council members are elected by district and one is elected at-large to staggered 4-year terms. The Chair is elected at large to a 4-year term. The Sheriff, Elections Supervisor and Property Appraiser are also elected officers of the County.

The County Manager appoints all other non-elected officers and manages and evaluates their work. This includes a wide variety of services organized into these functional groups: Airport and Port Services, Financial and Administrative Services, Community Services, Convention Center, Economic Development, Growth and Resource Management, Internal Auditing, Public Works, and Public Protection. The current County budget is about \$580M and there are about 3,100 County employees. Fire and Sheriff employees are unionized. Volusia County is known for its well-managed and highly stable government.

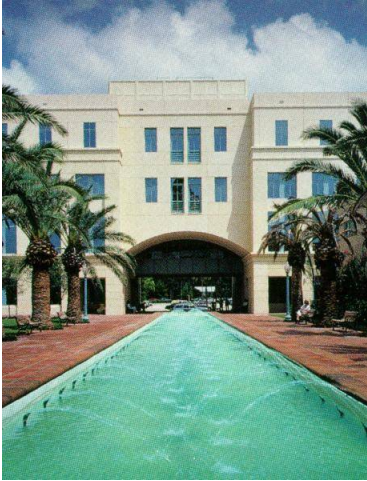
Demand for services continues to increase with the County's growing population. Despite the pressures of growth and the need for services, the County budget and major tax rates have increased modestly.

Volusia County Government



About the Position

The Management and Budget Director is an administrative position responsible for planning, organizing, preparing, and coordinating the development and implementation of the county's operating and capital budgets; administering budget policies and procedures; directing management studies; and coordinating the implementation of new programs and management techniques with other divisions.



Thomas C. Kelly Administration Center

Duties typically include:

- Develops and interprets directives, regulations, and procedures to implement budget policies and practices.
- Determines the propriety and cost effectiveness of funding requests through review of budget and accounting transactions, and analysis of productivity, workload, and program accomplishments.
- Gathers, extracts, reviews, verifies, and consolidates a variety of narrative information and statistical data needed in the formulation and presentation of budget recommendations. Analyzes revenue sources and prepares annual and long-range revenue estimates.
- Advises on the allocation of resources through the County's budgeting processes; on the efficiency and effectiveness of programs; and on other management and policy matters.
- Provides long-range cost estimates; plans and advises on effective and efficient means for the acquisition and use of funds to support programs and activities.
- Analyzes and compares objectives, programs and activities in order to recommend levels of funding and/or alternative methods of financing programs and operations.
- Administers the annual operating and capital budgets.
- Reviews program data, workload reports, and staffing requests to assure that positions within the various service centers/groups and activities are properly funded and that authorized grade and staffing levels are maintained.

Position requires the equivalent of a Bachelor's degree in Public or Business Administration, Finance, Economics, Accounting or related field and five (5) years of professional financial/management analysis experience with significant management level experience preferably gained in a governmental organization. Must be an excellent manager with a comprehensive and current understanding of the functions listed above and how they are applied in a fast-growing community

The position offers a highly competitive salary negotiable DOQs plus an outstanding benefits package

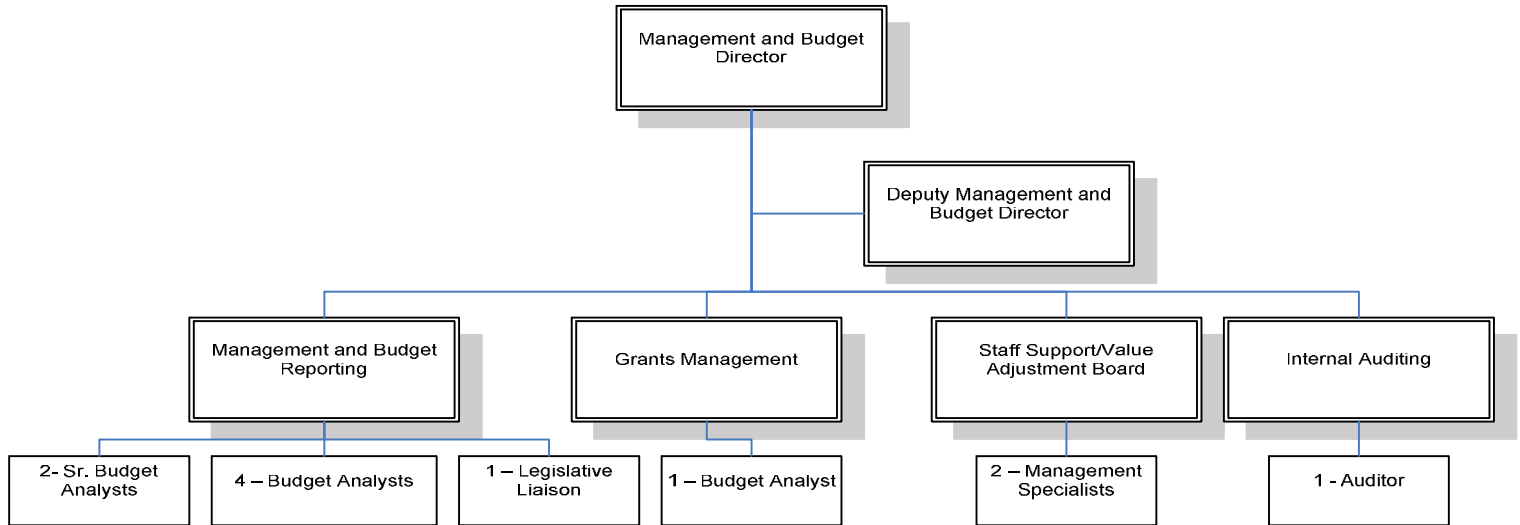


Historic Ponce De Leon Inlet Lighthouse

Department Structure

Volusia County Government

Financial and Administrative Services
Management and Budget



How to Apply

Please submit your resume and cover letter with current salary to:

Robert E. Slavin, President
SLAVIN MANAGEMENT CONSULTANTS
3040 Holcomb Bridge Road, Suite A-1
Norcross, Georgia 30071
Phone: (770) 449-4656
Fax: (770) 416-0848
E-mail: slavin@bellsouth.net
Web site: www.slavinweb.com

Visit Volusia County's Management and Budget Division at <http://Volusia.org/budget>.

Note: Under Florida Law, resumes are public documents and will be provided to the media upon request. Please call prior to submitting your resume if confidentiality is important to you.

The position is considered open until filled.



Gemini Springs Park