

# The City of Titusville, Florida

invites your interest in the position of

## WATER RECLAMATION SUPERINTENDENT



*Titusville is a thriving Florida City serving the space industry and the best place on the east coast for viewing rocket launches. Attractive local activities include beachgoing, regional bicycle trails, rocket launches, wildlife watching, year-round golf, kayaking, boating, and world class fresh and saltwater fishing.*



*Downtown Titusville fronts the Indian River Lagoon*

### ABOUT TITUSVILLE, FLORIDA

Titusville is located on the east coast of Florida, 40 miles east of Orlando, along the Indian River Lagoon in Brevard County. The City covers 30 square miles and serves a population of 50,000 citizens. The City's central location provides easy access to Canaveral National Seashore, Daytona International Speedway, Port Canaveral, Kennedy Space Center, and all Orlando attractions. Titusville was primarily a residential City serving the space industry, but in the past decade has evolved into a landing spot for industries serving the expanding public and private ventures of Cape Canaveral, US Space Force and NASA.

Titusville has a sustained thriving local economy spurred by the space industry and is a destination of choice for US residential and industrial relocations targeting sunny Florida and an income tax-free, business-friendly environment. Titusville is also 40 minutes away from Orlando, the southeast US's premier business and supply hub. Despite its economic viability and modern housing options, Titusville retains a small-town feel with easy access to rural village living.

Attractive local activities include beachgoing, regional bicycle trails, rocket launches, wildlife watching, year-round golf, kayaking, boating, and world class fresh and saltwater fishing. Titusville and the region provide a variety of housing accommodations for all tastes including luxury waterfront condos, modern communities, period 1960s “Florida house” neighborhoods, marinas, rural villages and ranchettes. Titusville offers a full range of dining options, a nostalgic downtown filled with quirky shops, a local microbrewery, and rich, unspoiled natural landscapes which attract explorers of all ages. Titusville is a gateway to Canaveral National Seashore, 24 miles of undeveloped, protected shoreline where crystal-blue waters crash into shell-laden, sandy beaches, including 13 public beach access points. Titusville is at the confluence of four major developing rail trails extending to Maine and the Gulf of Mexico. Florida has no state income tax. Additional Information about Titusville is available at <https://www.titusville.com>.



*Playalinda Beach, with 24 miles of undeveloped, protected shoreline, is accessed from Titusville.*

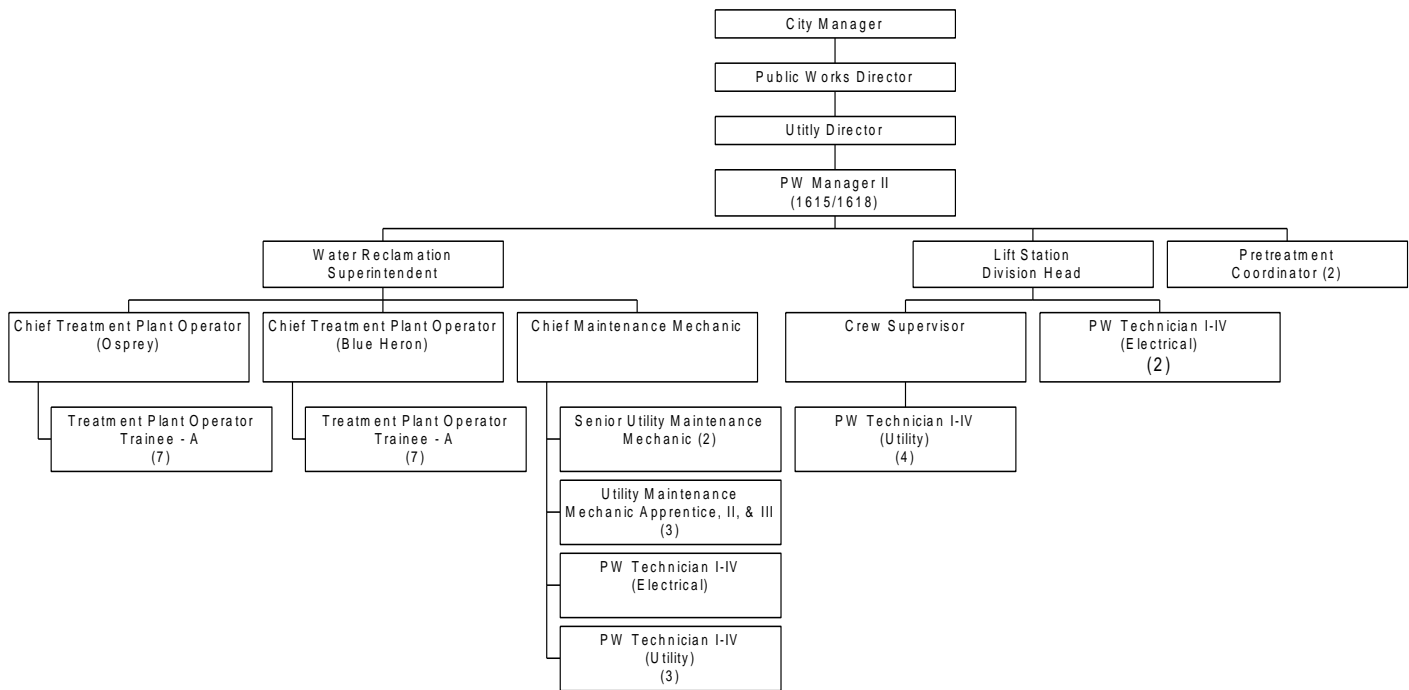
## **GOVERNANCE AND ORGANIZATION**

The City of Titusville is governed by a five-member City Council whose Mayor and members are elected at-large to four-year staggered terms. Titusville is a “strong city manager” government, where the City Manager provides the chain of command linking staff with elected officials. Titusville provides a full range of city services including law enforcement; fire and emergency services; neighborhood and social services; community development; planning; building permits; City marina; and public works.

The Public Works Department combines City drinking water, sanitary and reuse water utilities with parks, facilities, streets, and storm water management. Functional goals of the Public Works Department include a

positive work environment, ample staff promotion opportunities, open interdivisional support, life cycle master planning, and prioritized infrastructure investment to address depreciation and the need for modernization. The Public Works Department Utility Branch spends \$10-30 million dollars per year in capital projects to replace depreciated infrastructure and upgrade our processes to meet current DEP standards, provide safe reuse water and prevent spills and other environmental impacts.

**City of Titusville, Florida**  
*Public Works Department Organizational Chart*  
*Utility Branch*  
*Water Reclamation Division*



**THE WATER RECLAMATION DIVISION**

The Water Reclamation Division employs thirty-eight full-time employees. Two Operations Chiefs (one for each reclamation plant) and one Maintenance Chief report to the Reclamation Superintendent. The Reclamation Superintendent, one Lift Station Chief and two Pretreatment Coordinators report to the Public Works Manager, who in turn reports to the Utility Director. The remaining thirty Reclamation Division employees are blue collar operators, maintenance mechanics and technicians. An apprenticeship program assists in the recruitment and training of the operators. The Water Reclamation Division operational budget is \$2.3 million.

The Water Reclamation Superintendent reports to a Public Works Manager and oversees the operation and maintenance of two reclamation plants, Blue Heron (4mgd) and Osprey (2.75mgd), in addition to the operation of a common reuse water distribution system. Both water reclamation plants are staffed 24-hours/7-days. Together, these facilities provide advanced wastewater treatment including biological nutrient removal, effluent filtration, and constructed wetlands.

The effluent from each plant is individually pumped into a common reuse water distribution system which irrigates residential lawns and supplies golf course ponds. Blue Heron plant is equipped with constructed wetlands used for storage, tertiary treatment, and effluent disposal to a natural wetlands system tributary to the Saint Johns River.

*Constructed wetlands at Blue Heron WRF are a regular stop on national birdwatching events.*



## THE WATER RECLAMATION SUPERINTENDENT

The Water Reclamation Superintendent position requires sufficient technical and supervisory expertise needed to properly manage the operation and mechanical maintenance of the wastewater treatment plants and related systems. The Superintendent frequently interacts with the public and governmental agencies which impact the wastewater permitting and treatment process. The work is performed under the general direction of the Public Works Manager, but with minimum direct supervision. Assignments are received orally and in writing. The Superintendent is expected to anticipate work activities, exercise independent judgement, and make decisions within the scope of responsibility.



*Sand Point Park is one of 26 public parks in Titusville.*

Minimum requirements are a Bachelor's degree in engineering, chemistry, or related field plus five years of progressively responsible experience in the operation of a water reclamation facility which must include two years of supervisory experience. A combination of education and experience may be considered. Special requirements are a valid Florida driver's license with an acceptable driving record and a state of Florida Class "A" Wastewater Operator's license or the ability to obtain one within one year from the date of hire.

The ideal candidate will have a coaching and mentoring leadership style, a proven record of addressing needs in a timely and orderly fashion. This position will budget and manage hiring, supplies, and capital outlay procurement for the division. The desired candidate will be experienced in scheduling reclamation facility operations and physical needs with support divisions, design teams, purchasing teams and construction contractors for capital improvement programs and capital outlays for equipment upgrade, backup, and replacement activities. The candidate shall have knowledge of State and Federal rules, regulations, and laws regarding wastewater treatment, reclamation, reuse distribution and residuals management.



### *City of Titusville Marina*

Beginning pay is expected to be industry and regionally competitive and negotiable depending upon qualifications. The City's excellent benefit package includes health, dental and vision coverage, City retirement, optional deferred retirement plans with a matching employer contribution, life insurance, generous paid time off programs, bereavement leave, family leave, a variety of employee well-being programs and tuition reimbursement. A detailed recruitment profile is available on the Slavin Management Consultant website at [www.slavinweb.net](http://www.slavinweb.net).

The position will remain open until filled. To apply please submit a cover letter, detailed resume, and current salary to: Robert E. Slavin, President; SLAVIN MANAGEMENT CONSULTANTS; 3040 Holcomb Bridge Road, Suite A-1; Norcross, Georgia 30071; Phone: (770) 449-4656; Fax: (770) 416-0848; e-mail: [slavin@bellsouth.net](mailto:slavin@bellsouth.net). Electronic submissions are preferred.



***E.O.E. The City of Titusville prohibits discrimination and harassment of any type with regard to race, color, religion, age, sex, national origin, disability status, genetics, protected veteran status, sexual orientation, gender identity or expression, or any other characteristic protected by federal, state, or local laws.***