



CITY OF STATESBORO, GEORGIA CITY MANAGER

AREA FACTS

- Statesboro was incorporated on December 19, 1803, with a population of less than 25 people.
- There are no other cities in the U.S. named Statesboro.
- The City of Statesboro is approximately 13 square miles with an average elevation of 240 feet above sea level, the terrain being mostly flat.
- There are 16 public schools and 3 private and parochial schools in Bulloch County.
- The City has 106 miles of roads of which 98 are paved and 30 streetlights.
- Natural gas is sold to 3304 customers while water and sewer service is provided by the City to over 10,000 customers with an average daily water consumption of 3.9 million gallons.

STATESBORO, GEORGIA

The City of Statesboro is a progressive community that provides an exceptional quality of life to its residents and offers southern charm and hospitality to its visitors. The City offers a high standard of living with a commitment to ensure the most responsive and progressive public services to residents, businesses, and visitors.

The Statesboro area boasts a thriving arts community, diverse attractions, a vibrant and inviting downtown, numerous historic and architectural attractions, and unique shopping options.

Statesboro, in southeast Georgia, is the county seat and most populous city of Bulloch County. The City is best known as the home to Georgia Southern University. It was chartered in 1803, starting as a small farming community providing the basic essentials for surrounding farms.

Statesboro offers a diversified array of employment opportunities. The City is currently experiencing rapid economic growth in commercial/retail expansion and residential developments.



City Hall

The City's largest employer is Georgia Southern University. Statesboro is a leader in health care in the area.

The culture of Statesboro reflects a blend of both its southern heritage and college town identity. The downtown area is currently undergoing a revitalization led in part due to the construction of The David H. Averitt Center for the Arts in the Old Bank of Statesboro and Georgia Theater. The center is home to the Emma Kelly Theater named after Statesboro's music legend. The center also contains art studios, conference rooms and an exhibition area. In recent years, a number of restaurants and shops have opened in downtown Statesboro.

DEMOGRAPHICS

- The City's population for 2000 was 22,698 and is now estimated to be approximately 24,604.
- According to the 2000 census, the City's population is 56.2% Caucasian, 40.2% African-American, 2.1 % Hispanic, and 1.5% Asian or other. Those 18 years of age and older are 85.7% of the population and those 65 years of age and older are 9.2% of the population.
- Approximately 50% of the Bulloch County labor force is employed by the government sector including one of the City's largest employers, Georgia Southern University, the Board of Education, the City and County governments.



Location of Statesboro

- The per capita income for the City in 2007 is \$28, 656.
- The median age is 26.

Note: Students of Georgia Southern University are included in the demographic data and may skew some results.

THE GOVERNMENT



The City operates under the Council-Manager form of government established by a 1999 Charter amendment. The Mayor is elected at-large while the five council members are elected by district. All elections are non-partisan and the terms are for four years, with half of the members elected every two years. The City Council appoints the City Manager to head the administrative functions of City government. As authorized by its Charter and Code, the services provided by the City are General Government (Administration, Human Resources, Finance, Planning and Engineering), Judicial (Municipal Court), Public Safety (Police and Fire), and Public Works (Streets, Sanitation, Water and Sewer and Gas).

ABOUT THE POSITION OF CITY MANAGER

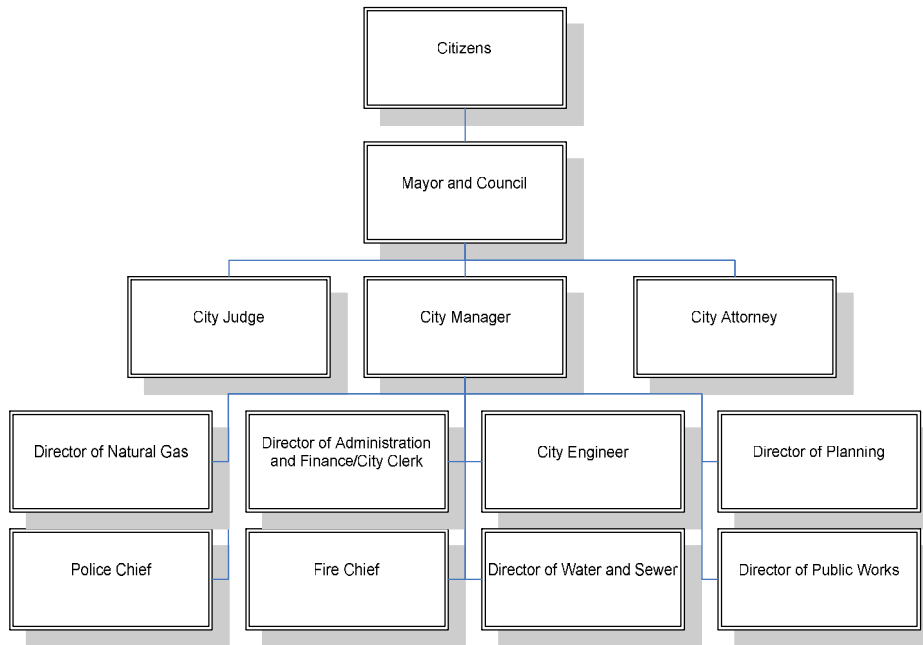


Triangle Park

The Manager serves as the City’s chief executive officer responsible for the effective and efficient operation of a full-service city that provides police, fire, water/wastewater and gas to the City and some of the surrounding area. The City Manager serves and advises the Council, hires department directors, prepares the annual budget for Council consideration and coordinates City operations and programs.

The City has 262 full-time employees and a general fund budget of \$13.7M.

CITY OF STATESBORO ORGANIZATIONAL CHART



MISSION STATEMENT

To provide the most responsive and progressive public services so that our residents, businesses, and visitors can enjoy the highest quality of life Statesboro has to offer.

Slavin Management
Consultants

3040 Holcomb Bridge Road
Suite A-1
Norcross, GA 30071
Website: www.slavinweb.com

Phone: (770) 449-4656
Fax: (770) 416-0848
Email: slavin@bellsouth.net



ISSUES, PROBLEMS, OPPORTUNITIES AND ATTRIBUTES

- Ability to see beyond basic problem and understand the big picture of government.
- Build relationships with County government and continue rapport with Georgia Southern University.
- Strategic thinker on economic and growth related issues.
- Ability to motivate and mentor City employees. Have vision, establish mission and goals. Committed to high standards of government.
- Balance, understand and provide guidance on issues related to alcohol sales in City.
- Understand Utilities - water, wastewater and gas.
- Develop succession planning.
- Examine and advise Council on redistricting issues.

Visit Statesboro on the
Web at: www.sboro.net

How to Apply

This position will remain open until filled. If you are interested in applying, please send your resume with cover letter and salary history to:

Sam Trager, Managing Consultant
Slavin Management Consultants
3040 Holcomb Bridge Road
Suite A-1
Norcross, GA 30071

Phone: (770) 449-4656
Fax: (770) 416-0848
Email: slavin@bellsouth.net

Salary is considered open. The City prefers an experienced city manager with a Master's Degree.

Note: Under the Georgia Open Records Law, applications of the final three candidates are subject to public disclosure 14 days prior to appointment. An Equal Opportunity Employer/Recruiter

Visit Slavin Management
Consultants on the web at:
www.slavinweb.com