

# MIAMI VALLEY REGIONAL PLANNING COMMISSION

Invites your interest in the position of:

## EXECUTIVE DIRECTOR



### Background

The Miami Valley Regional Planning Commission (MVRPC) was formed in 1964, in response to the increasing need for a voluntary association of governments that could study issues and propose solutions to regional problems. In 1973, MVRPC was designated by the governor as a Metropolitan Planning Organization (MPO) to perform transportation planning activities in the Dayton Metro Region. The regional geographic area includes all of Darke, Greene, Miami, Montgomery and Preble Counties and parts of northern Warren County . The total population served is about 947,000.

MVRPC is organized under the Ohio Revised Code as a regional planning commission (i.e. public agency) consisting of a voluntary association of members. This commission can hire an executive director and staff to conduct activities for the commission.

MVRPC strives to foster collaboration among communities, stakeholders and residents to advance regional transportation priorities. MVRPC is a forum and resource where these regional partners can identify priorities, develop public policy and implement collaborative strategies to improve the quality of life and economic vitality throughout the Miami Valley. MVRPC performs various regional planning activities including air quality, water quality, transportation, land use, research and GIS. As the designated Metropolitan Planning Organization (MPO), MVRPC is responsible for transportation planning in Greene, Miami and Montgomery Counties and parts of northern Warren County.

MVRPC currently has 53 governmental and 24 non-governmental members that constitute the full Commission with 77 members. The FY2012 budget is about \$4.6 million which supports a staff of 22. About 80% of the budget is derived from federal/state funds with the Ohio Department of Transportation the largest single funder. Stakeholders in regional and transportation planning issues are the general public, local jurisdictions, transit agencies, business communities, special interest groups and federal and state governments, (FHWA, FTA, EPA, Ohio Department of Transportation, etc.).

## Funding Structure

About 80% of MVRPC budget is from federal/state transportation funding, 13% from local membership dues assessments used as federal/state matching funds, and about 7% other state or local grants.

## Transportation Planning

Federal law established Metropolitan Planning Organizations (MPO) that require urbanized areas to have an MPO with membership consisting primarily of local elected officials. MPOs are responsible for conducting the metropolitan transportation planning process and deciding how federal transportation funds are allocated to the area. MPO's are required by state and federal law to develop:

- Annual Planning Work Program
- Long Range Transportation Plan 20+ Years)
- Short Range Transportation Improvement Plan (4 years) known as the Transportation Improvement Plan (TIP)

MVRPC also manages the application, review, and prioritization of locally controlled transportation funds which member jurisdictions use for transportation funding.

## Water Quality Planning

In 1972, Congress passed the Clean Water Act Amendments which required that water quality management plans be prepared in areas where water pollution problems existed. In 1974, MVRPC was named the Designated Planning Agency (DPA) for water quality planning by the Governor.

Since that designation MVRPC has prepared and periodically updates the Area-wide Water Quality Management Plan (AWQMP) that identifies and describes the area's water resources and the threats to those resources. The AWQMP also recommends action for addressing these threats and identifies parties responsible for tak-

ing action. Committees comprised of local government and other water related agencies, private sector representatives and citizens meet to review and update plan content. The funding sources for planning generally include state EPA, federal EPA, and other state funds.

## Regional Planning Services

MVRPC acquires updates and maintains various planning related databases including extensive GIS datasets. These are available to the public and for the staff of member jurisdictions.

MVRPC performs various planning-related research activities that examine and assess various planning related issues, e.g., demographic, social, economic, and environmental issues in a regional and/or subregional context. MVRPC maintains an extensive library of regional information, reports, maps and aerial photography.

MVRPC, as a census affiliate organization, serves as a U.S. Census Depository and provides assistance for census inquiries to the public and for the staff of member jurisdictions.

Visit MVRPC on the web at [www.mvrpc.org](http://www.mvrpc.org).

### VISION

To serve as regional stewards, creating a vibrant community, vigorous economy and healthy environment.

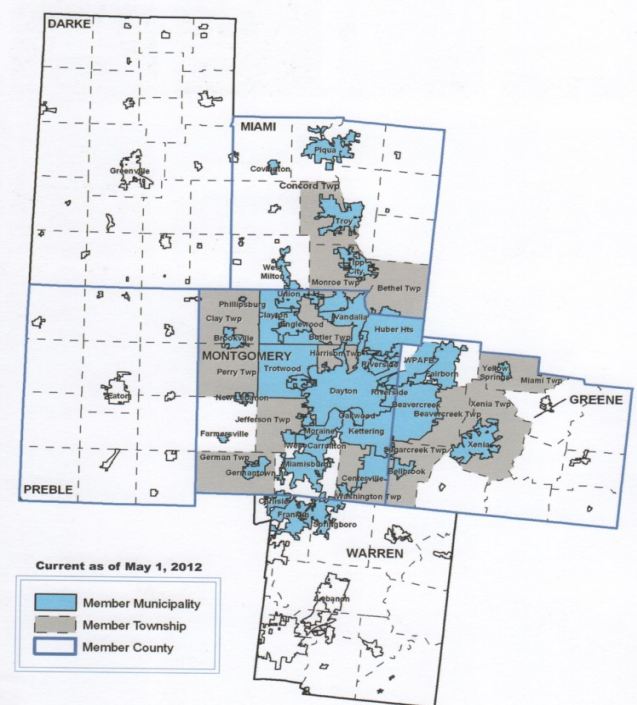
### MISSION

The Miami Valley Regional Planning Commission strives to foster collaboration among communities, stakeholders and residents to advance regional priorities. MVRPC is a forum and resource where these regional partners can identify priorities, develop public policy, and implement collaborative strategies to improve the quality of life and economic vitality throughout the Miami Valley.

### VALUES

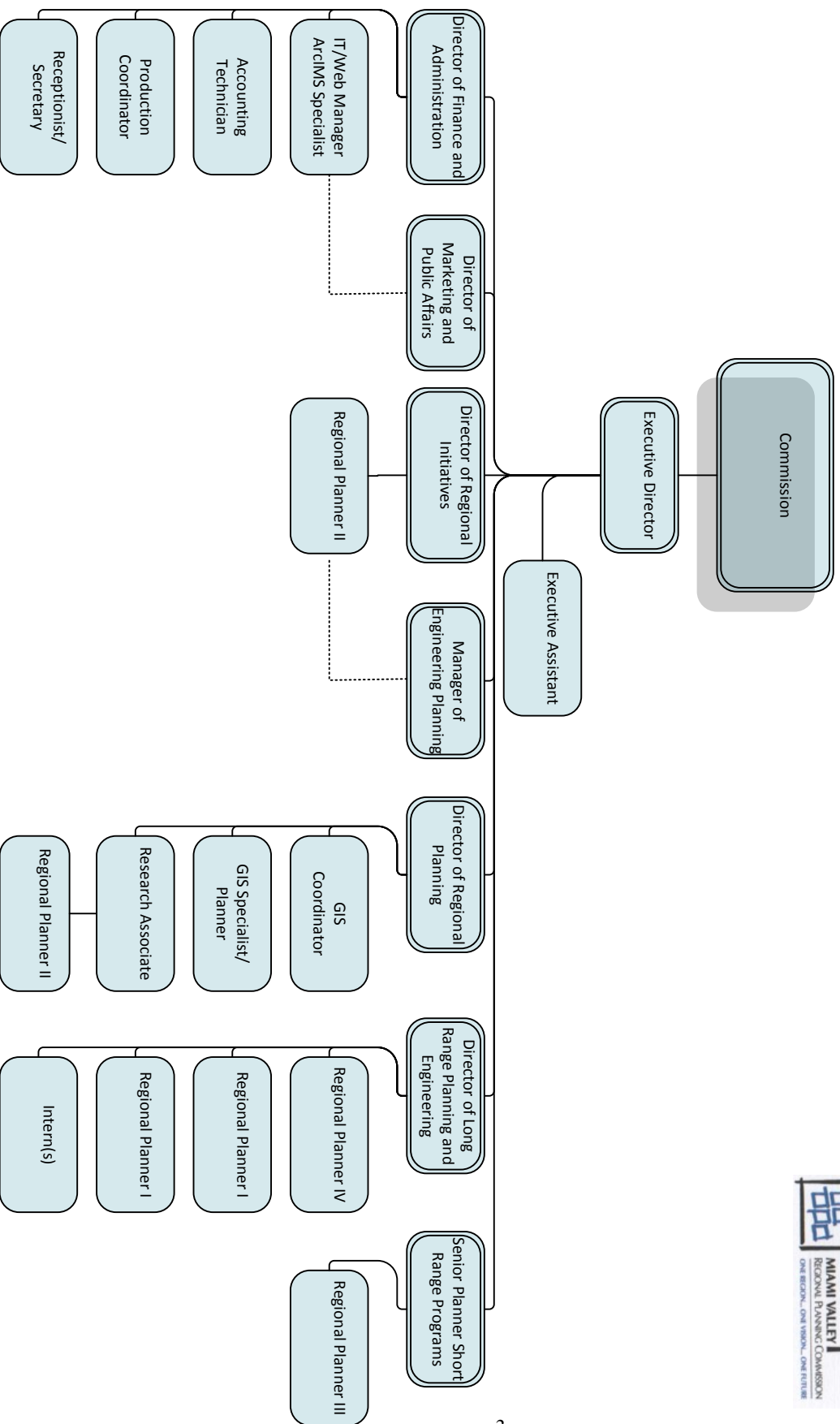
We recognize that the people of the Miami Valley are linked and enriched by both the things we share and the things that make us unique. We take pride in our diverse communities that are bound together in a larger Region of shared values by our history, our spirit of innovation, our economy, and our environment. We appreciate the need to balance growth across the Region, to provide better planning and incentives to preserve natural resources, and to work together to creatively address regional concerns while retaining local independence.

JURISDICTION MAP



# Miami Valley Regional Planning Commission

February 2012





## ABOUT THE EXECUTIVE DIRECTOR

### Education, Knowledge and Experience

- Bachelor degree is required and should be in a related field; Advanced degree in planning, public policy, management, public administration or related field is highly desirable.
- 10+ years of progressively responsible experience including five to seven years planning experience; three to five years of executive level transportation planning experience is highly desirable. Some private sector experience would be a plus.
- Demonstrated communication skills both verbal and written; strong, persuasive presentation skills including public meetings and media relations.
- Demonstrated executive administration, strategic planning, and management of public participation processes to consistently accomplish the mission of a planning commission.
- Demonstrated knowledge of local governments and legislative processes of federal and state agencies.
- Ability to establish and maintain effective working relationships (partnership) with Commission members including a demonstrated collaborative approach to problem solving.
- Ability to establish and maintain effective working relationships with local elected and appointed officials; federal, state, regional and local agencies; business and community leaders; and the general public.
- Understanding of the legal responsibilities and constraints of the agency; knowledge of federal and state laws pertaining to transportation regulations.
- Demonstrated experience of transportation planning, use of demographic and GIS information, land use planning, environmental planning and sustainable growth strategies.
- Experience with preparing, monitoring and managing financial plans, budgets and Board of Directors presentations; supervision and preparation of complex comprehensive reports including recommendations for a course of action for agency responsibilities.
- Experience with obtaining and managing grants and contract funding from state, federal and private sources or other partners. Demonstrated experience with consultant selection and management.



## Management Style and Personal Characteristics

- Ability to maintain confidentiality of business matters.
- Ability to work collaboratively to facilitate issues, synthesizing a wide range of viewpoints; proposes practical solutions and seeks to involve stakeholders.
- Ability to consistently follow planning processes and comply with deadlines.
- Demonstrated preference to work in a public role, maintain a highly visible public profile and frequently work with multiple constituencies including attendance at regional meetings and after hour events.
- Ability to set goals, effectively lead others to accomplish goals and to create a positive and relevant public image for MVRPC.
- Skilled in mentoring talented professionals.
- Ability to work as part of a team as a good listener, respecting varying points of view and opinions while building professional relationships with staff, colleagues, Board members, elected officials, community leaders, and citizens.
- Ability to absorb information quickly and perform duties in a timely and accurate fashion.
- Ability to handle multiple priorities and respond to multiple customers (internal and external).
- Ability to provide a high level of service in the conduct of MVRPC activities.

## COMPENSATION & HOW TO APPLY

### Compensation

Highly competitive salary negotiable based upon qualifications and experience plus excellent benefits.

### To Apply

Apply by email or U.S. Mail by August 31, 2012 to:

David Krings or Robert Slavin  
**SLAVIN MANAGEMENT CONSULTANTS**  
3040 Holcomb Bridge Road #A1  
Norcross, GA 30071  
Phone: 770.449.4656  
Fax: 770.416.0848  
[slavin@bellsouth.net](mailto:slavin@bellsouth.net)



**NOTICE:** In accordance with Ohio law, applications, resumes and other application related documents for public positions are a matter of public record and may be disclosed to the media or public upon proper request. If confidentiality is important, please contact us prior to submitting your resume.

**MVRPC is an Equal Opportunity Employer**





## WE'RE ON OUR WAY!

Though our Region is made up of diverse entities, each with unique qualities, we know we are united by our similarities. Together, we comprise one community – **the Greater Miami Valley** – and we have the same desire to be proper stewards of our resources, encourage balanced growth, and create a better tomorrow for ourselves and generations to come. The Miami Valley Regional Planning Commission (MVRPC) serves as the common ground where area partners come together to give life to the visions that will ultimately serve the common good. Together public and private partners are able to collaborate and develop strategies that will improve lives and create an environment of economic vitality throughout the Region

