

HOME OF 'THE BEST QUALITY OF LIFE IN GEORGIA'

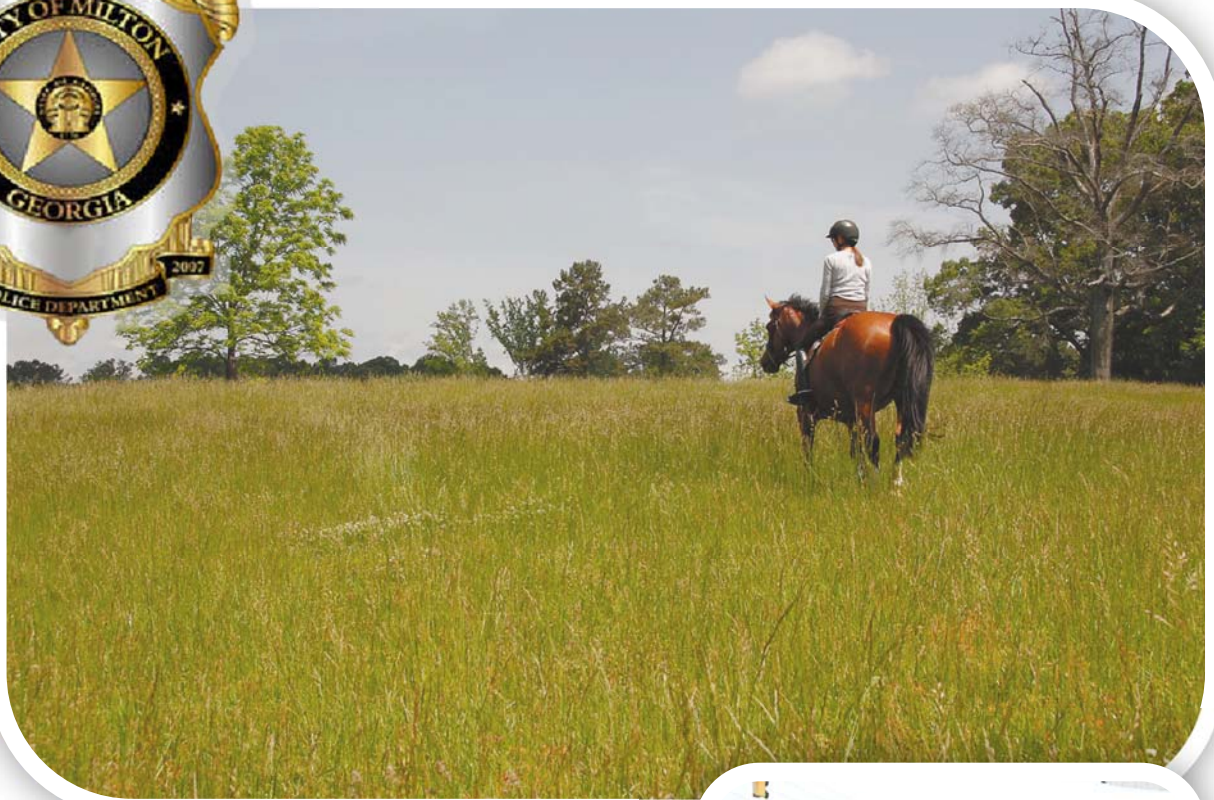
# MILTON



ESTABLISHED 2006

*Seeks Committed and Proven  
Professional for the Position of*

# CHIEF OF POLICE





## ABOUT THE CITY OF MILTON

Milton is an area of Fulton County, Georgia that became incorporated as a city on December 1, 2006.

Milton has a population of 36,000. Geographically, the city covers 38 square miles. The city includes the northwest unincorporated island that is bordered by Cherokee County to the north and west; Forsyth County to the east; Roswell city limits to the southwest; Alpharetta city limits to the south.

The city is part of Fulton County with County Commission representation. The difference is now most services will be decided by local City Council members rather than Fulton County Commissioners.

On January 1, 2010, the City ended their relationship with CH2M Hill and today is staffed by city employees.

## ABOUT THE POLICE DEPARTMENT

Since the Milton Police Department began serving the citizens of Milton on May 1, 2007, it has grown to an authorized strength of 39 officers.

The department is state certified and CALEA accredited.

Officers are encouraged to continually improve themselves and the way they interact with the community.



The department is staffed with exceptional men and women who strive to be an open and integral asset to the community.



This is accomplished through practicing the core values of our agency: People First, Service, Creativity, Initiative and Problem Solving.

## CITY GOVERNMENT

Milton is a full-service government providing police, fire, public works, community development, parks and recreation and administrative services to the citizens of Milton.



The City of Milton is governed by a Mayor and a six member City Council. The Mayor is elected to a four-year term. Council members are elected to staggered four-year terms. As with traditional council-manager governments, the day-to-day operation of the city is the responsibility of the City Manager, who oversees approximately 139 full-time employees. The FY 2016 general fund budget is \$26.3 million. The City Manager exercises direct supervision over all departments and employees of the city.

*The City of Milton is committed to maintaining the unique quality of life for our constituents while efficiently delivering essential services to residents and businesses in a community interactive environment.*

## ABOUT THE POSITION OF POLICE CHIEF

This is a highly visible position within the organization and, as such, will allow the successful candidate to continue to establish and grow a dynamic department.

The preferred individual will direct the long-range planning, resource allocation, and operational coordination of all Law Enforcement activity in the City. The Chief also maintains fiscal oversight of all allocations and disbursements of public funds for the purpose of law enforcement services in the City.



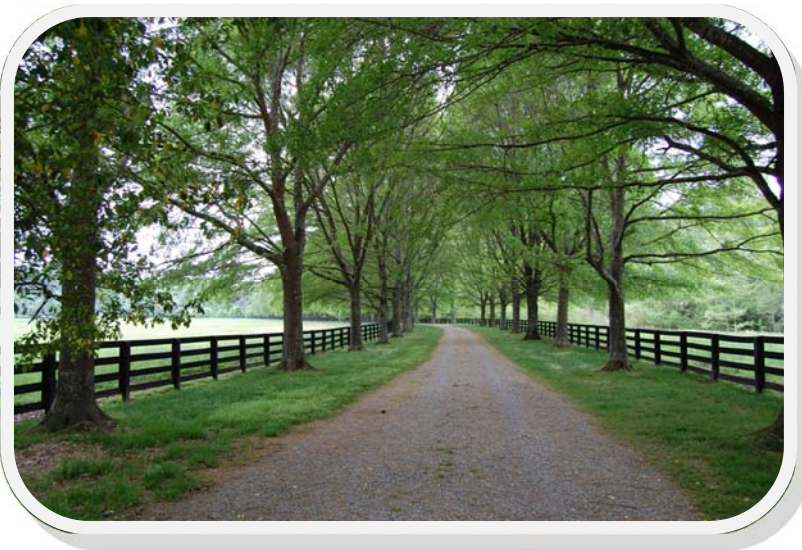
Minimum qualifications include a Bachelor's degree from an accredited college or university in Public Administration, Business Administration, or closely related field. A Master's degree is preferred. Must have law enforcement certification from your current state. A minimum of seven years of progressive experience in law enforcement, including at least four years in a management capacity; or any

equivalent combination of specialized training, education, and experience which provides the requisite knowledge, skills, and abilities for this position. Broad base of experience in patrol and investigations is desired. Must obtain within one year and maintain relevant GA P.O.S.T. certifications and required levels of proficiency in appropriate skills. Must possess a valid driver's license and satisfactory motor vehicle record.

*MILTON IS A DISTINCTIVE COMMUNITY EMBRACING SMALL-TOWN LIFE AND HERITAGE WHILE PRESERVING AND ENHANCING OUR RURAL CHARACTER.*

## ISSUES AND OPPORTUNITIES

- Ability to work with the community as a partner and understand the unique policing needs of the city.
- Balance competing priorities within budget.
- Provide a full range of services with a small staff.
- See the department's fit within the organization.
- Grow and develop staff.



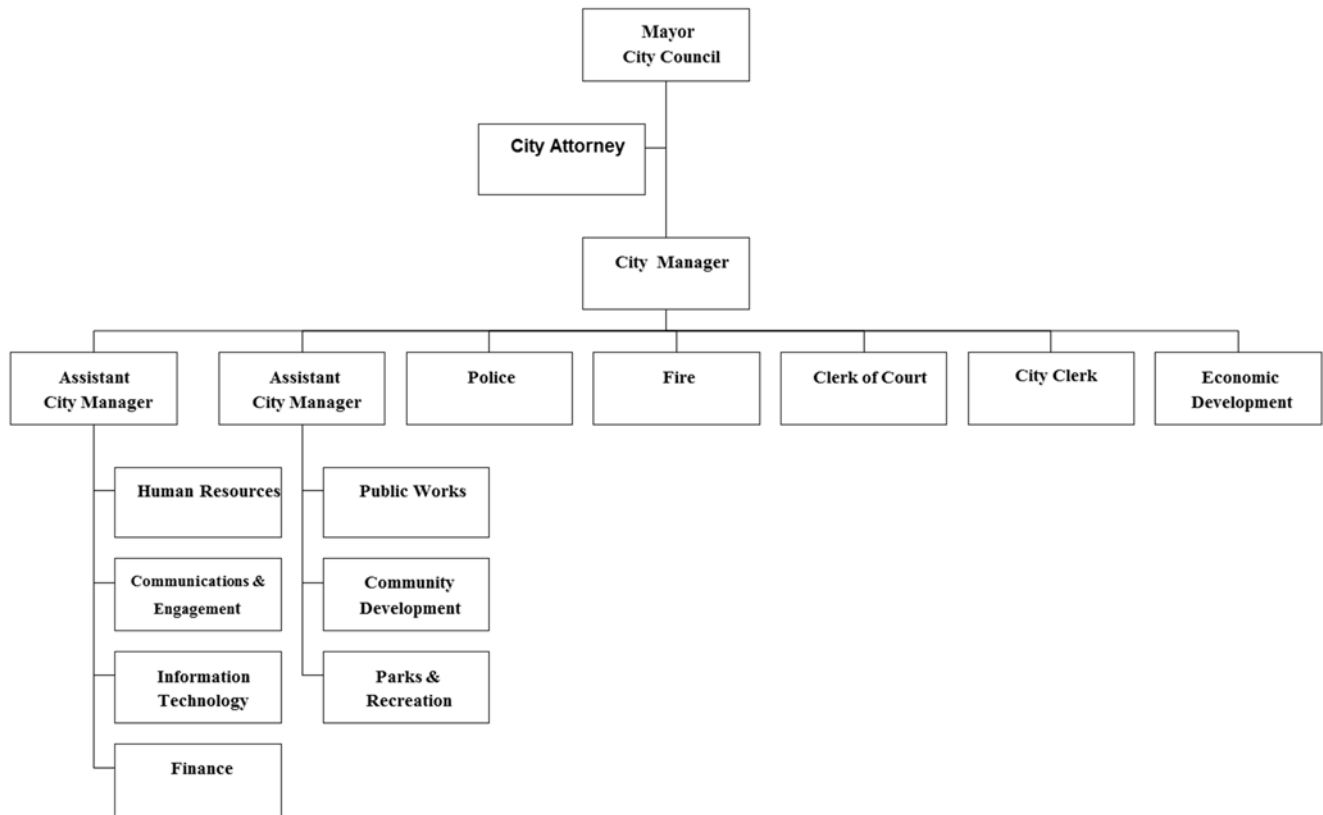
## SALARY AND BENEFITS

The City of Milton offers a competitive salary and benefits package including:

- A Social Security exempt defined contribution pension program that includes an excellent match.
- Health Insurance, life and disability coverage.
- Generous vacation and sick leave policy.



City of Milton  
Department Organizational Chart



For more information, visit us on the web at [www.cityofmiltonga.us](http://www.cityofmiltonga.us)

## HOW TO APPLY

This position will remain open until filled. We will review applications for the first time on January 7, 2015. If you are interested in applying, please send your resume with cover letter to:

Robert E. Slavin, President  
**SLAVIN MANAGEMENT CONSULTANTS**  
3040 Holcomb Bridge Road, Suite B-1  
Norcross, Georgia 30071  
Phone: (770) 449-4656  
Fax: (770) 416-0848  
E-mail [slavin@bellsouth.net](mailto:slavin@bellsouth.net)

