



CITY OF ALBANY, GEORGIA FINANCE DIRECTOR

ALBANY, GEORGIA

Origin and Growth

Situated in the Plantation Trace region, Albany is the primary trade center for Southwest Georgia. It is the county seat for Dougherty County. The City lies at the head of the Flint River, 145 miles south of Atlanta. Incorporated in 1841, the City was laid out in 1836 by Alexander Shotwell and named for Albany, New York. The City of Albany was originally incorporated by an Act of the General Assembly of Georgia on December 27, 1838.

The chief farm products are cotton, peanuts, corn and tobacco, and to a lesser extent, paper-shell pecans and forest products. Albany has also developed a diversified industrial economy which includes companies such as Procter & Gamble, Merck & Company, Miller Brewing, and M & M Mars. In 1998, Money Magazine's survey of "Best Places" to live in the nation rated Albany as the most livable city in the state of Georgia. In addition, Albany was ranked 21st among cities up to 250,000 in the southeast U.S. and rated #141 in 1996, #115 in 1995 and #151 in 1994.

Educational Facilities

For higher education, Albany has two home-town colleges and a job corps center. Albany State University is a senior unit of the University System of Georgia. With more than 40 major fields of study, the college offers undergraduate and graduate degree programs. The university maintains flexible scheduling for the growing number of non-traditional students. Darton College is a two-year unit of the University System of Georgia. Students can pursue 73 two-year transfer and career associate degrees. Albany Technical College is a unit of the Georgia Department of Technical and Adult Education. Turner Job Corps Center also serves the Albany area as a fully accredited Vocational Education Institute, providing high



Downtown

quality academic and vocational training programs to prepare students (ages 16-24) to take their places in today's technical work force. Turner has over 20 vocational trades from which the 930-member student body may choose. The City is also served by 16 public elementary schools, 10 public secondary schools, 1 public alternative school and a number of private schools.

Source: Albany Chamber of Commerce

CONTENTS:

Albany, Georgia	1
Demographics	2
The Government	2
Organization Chart	3
Finance Director	3
Issues, Problems and Opportunities	4
To Apply	4

Special points of interest:

- Named a "City of Excellence"
- The business hub of Southwest Georgia
- Beautiful natural setting
- GFOA's Distinguished Budget Presentation Award
- A great place to visit and an ideal place to call home
- Home to several universities and colleges
- \$100M SPLOST initiative passed for 5th consecutive time
- Completing a \$200M downtown revitalization

Issues, Problems and Opportunities

- Review organization and recommend any necessary changes.
- Employee development and training.
- Address employee morale issues and work with staff to improve morale.
- Money management issues are highly scrutinized.
- Ability to convey complex issues in a clear and concise manner

To Apply

Position requires a Bachelor Degree in Accounting, Business, Finance or related field and seven years of progressively responsible experience. A Masters degree and/or CPA is preferred.

If you are interested in this excellent opportunity, and meet the minimum qualifications stated above, please submit your resume by as soon as possible to:

Robert E. Slavin, President
SLAVIN MANAGEMENT CONSULTANTS
 3040 Holcomb Bridge Road, Suite B-1
 Norcross, Georgia 30071
 Phone: (770) 449-4656
 Fax: (770) 416-0848
 E-mail: slavin@bellsouth.net

Salary to the upper \$70's plus excellent benefits

AN EQUAL OPPORTUNITY RECRUITER/EMPLOYER

Slavin Management
Consultants

3040 Holcomb Bridge Road, Suite B-1
Norcross, Georgia 30071

Phone: 770.449.4656
Fax: 770.416.0848
Email: slavin@bellsouth.net

*The Nation's Premier Governmental
Consulting Firm*

Visit Albany on the web at:
www.albany.ga.us



DEMOGRAPHICS

GENDER

Male	46%
Female	54%

RACE/ ETHNIC ORIGIN (2000 Estimate)

Black	64.8%
White	33.2%
Hispanic	1.2%
Asian	0.3%
Other	0.3%
American Indian	0.2%

AREA

Land Area	57 sq. mls.
Elevation	212 ft
Rainfall	48.5 inches
Avg. Temp	66 deg. F

JOB COMPOSITION

Manufacturing	17%
Transp./ Public Util	5.5%
Construction	5%
Wholesale Trade	5.5%
Finance & Real Est	2.9%
Services	32.5%
Agr, Forestry, etc.	2.2%
Retail Trade	17.6%

AGE COMPOSITION

Under 5 Years	7.8%
5 - 19 Years	24.2%
20 - 24 Years	8.8%
25 - 54 Years	39.7%
55 - 59 Years	4.2%
60- 74 Years	9.8%
75- 84 Years	4.1%
85+ Years	1.4%

COMMUNITY EDUCATION

Elem. Schools	16
Elem. Teachers	534
High Schools	11

High School Teachers	581
Area Colleges	3

HEALTH

Hospitals	2 (673 bds)
MD's	141
Dentists	48
Nursing homes	2 (418 bds)

RECREATIONAL FACILITIES

Public Tennis Courts	40
Parks	35
Area golf courses	7
Muni. swimming pools	2
Country clubs	2
Playgrounds	35
Community centers	4
Boat Ramps	4
Municipal gyms	2

OTHER ATTRACTIONS

- Albany Museum of Art
- Albany Little Theater
- Weatherbee Planetarium
- Parks at Chehaw
- 800 acre recreation and wild animal park
- \$30M open-air Blue Hole Spring
- Thronateeska Heritage Foundation Museum
- Albany Civil Rights Museum
- Quail hunting preserves
- Flint Riverquarium



Mounted Police

“The City of Albany strives for excellence to improve the overall quality of life for our citizens”

THE GOVERNMENT

The City of Albany is a full service municipality that has operated under the Commission-Manager form of government since January 14, 1924.

The seven-member commission consists of a Mayor elected at large and six Commissioners elected on a ward basis. The Commission appoints the City Manager, City Clerk, Assistant City Clerk, City Attorney, Municipal Court Judge, Interim Municipal Court

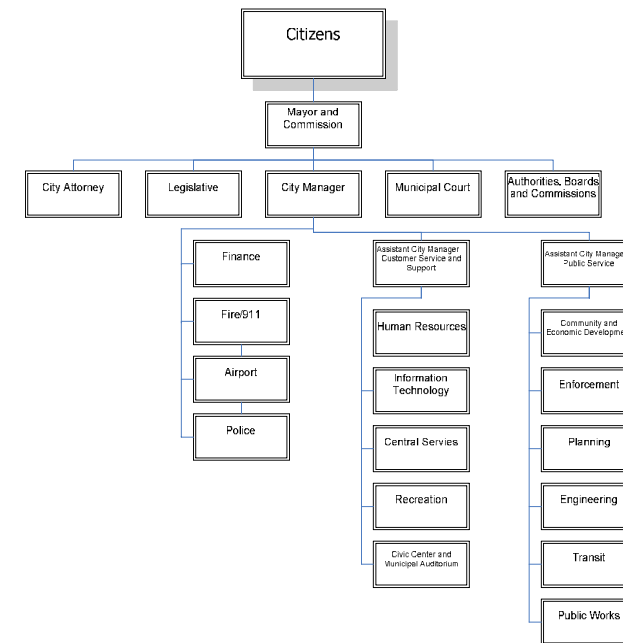
Judge, City Solicitor and Public Defender. The City Manager is charged with the enforcement of the laws and ordinances passed by the Commission and is the City's Chief Executive Officer. The Commission also appoints members to various Boards, Authorities, and Commissions.

It employs about 871 people and has a current general fund budget of \$46 million and a total budget of \$93 million.



Government Building

ORGANIZATION CHART



FINANCE DIRECTOR

The Finance Director is an exempt position appointed by the City Manager and serves at his pleasure and under his direction and control. The Finance Director to oversees, manages, administers and direct all aspects of the City's financial operations. Serves as trustee, administrator and technical advisor to the City Manager and City Commission regarding all fiscal operations to include short-term and long-term strategic financial planning.

Specific Duties include:

- Coordinates investment activities for reserve funds; prepares comprehensive financial reports and bond prospectus for new bond sales and other investment options; provides financial advice.
- Directs and oversees all finance operations, Office of Management & Budget (OMB), accounting, treasury, fixed assets, internal auditor, risk management services (Risk Management, Worker's Comp, LTD, etc) and Planning & Community Development accounting staff.
- Coordinates financial reports, information returns, and other requisition requests; forwards to applicable local, state, and federal agencies and organizations.
- Coordinates with City Manager, Management Budget Officer and Internal Auditor regarding capital improvement programs and long-term financing.
- Develops, implements and monitors multi year strategic plan.
- Develops long range forecasts for 5 year financial planning.